

SPECIFICATION

Device type	SPL-1500		SPL-620	SPL-370	SPL-180
Type	pulsed precise scan technology				
Color	Grey		Grey	Grey	White
Scanning Range ¹	0.6 ~ 1500 m		0.6 ~ 620m	0.6~370m	0.6~180m
Scanning Accuracy ²	3 mm @ 100 m		5 mm @ 100 m	5 mm @ 100 m	5 mm @ 100 m
Scan Rate	2,000,000 pts/sec		1,200,000 pts/sec	500,000 pts/sec	500,000 pts/sec
Angular Accuracy	0.001° (H./V.)				
Scanning FOV	360° (H.) & 300° (V.)				
Laser Class	Class1 eye-safe (in accordance with IEC 60825-1:2014)				
Laser Wavelength	1550 nm, invisible				
Laser Beam Divergence	0.3 mrad (1/e)				
Interface	USB 3.0, external power supply, Ethernet				
Data Storage	USB 3.0 flash drive 256 GB (as default)				
Imaging Resolution	inbuilt (24.6 MP in total, 2 x 12.3 MP)				
Scanning Control	on-board 5-inch HDR (720x1280) color touch display or web interface remote control on tablet/smartphone				
Dual-axis Compensator	compensating range±15°; compensating accuracy 0.008°		compensating range±10°	compensating range±10°	N/A
Sensor	integrated, height relative (to a fixed point) to detect		altimeter	N/A	N/A
	on board		on board	on board	on board
	integrated, orientation to detect		compass	N/A	N/A
	integrated tracking GPS(L1)&Beidou(B1)		GNSS	N/A	N/A
Power Supply	rechargeable battery (as default); external supply by 19V DC				
Power Consumption	25 W (while scanning)				
Battery Endurance	max. 4 h per unit (one unit needed for operation only)				
Operating Temperature	-20°C ~ +60°C				
Storage Temperature	-35°C ~ +70°C				
Humidity Resistance	non-condensing				
Ingress Protection	IP64		IP54	IP54	IP54
Net Weight	6 kg (without battery); 6.45 kg (with battery)				
Dimension	247x107x202mm				

*1. The measured distance is the test conclusion of the laboratory under 80% reflectivity and is for reference only.
*2. The measured accuracy is the test conclusion of the laboratory under 80% reflectivity and is for reference only.

CONFIGURATION

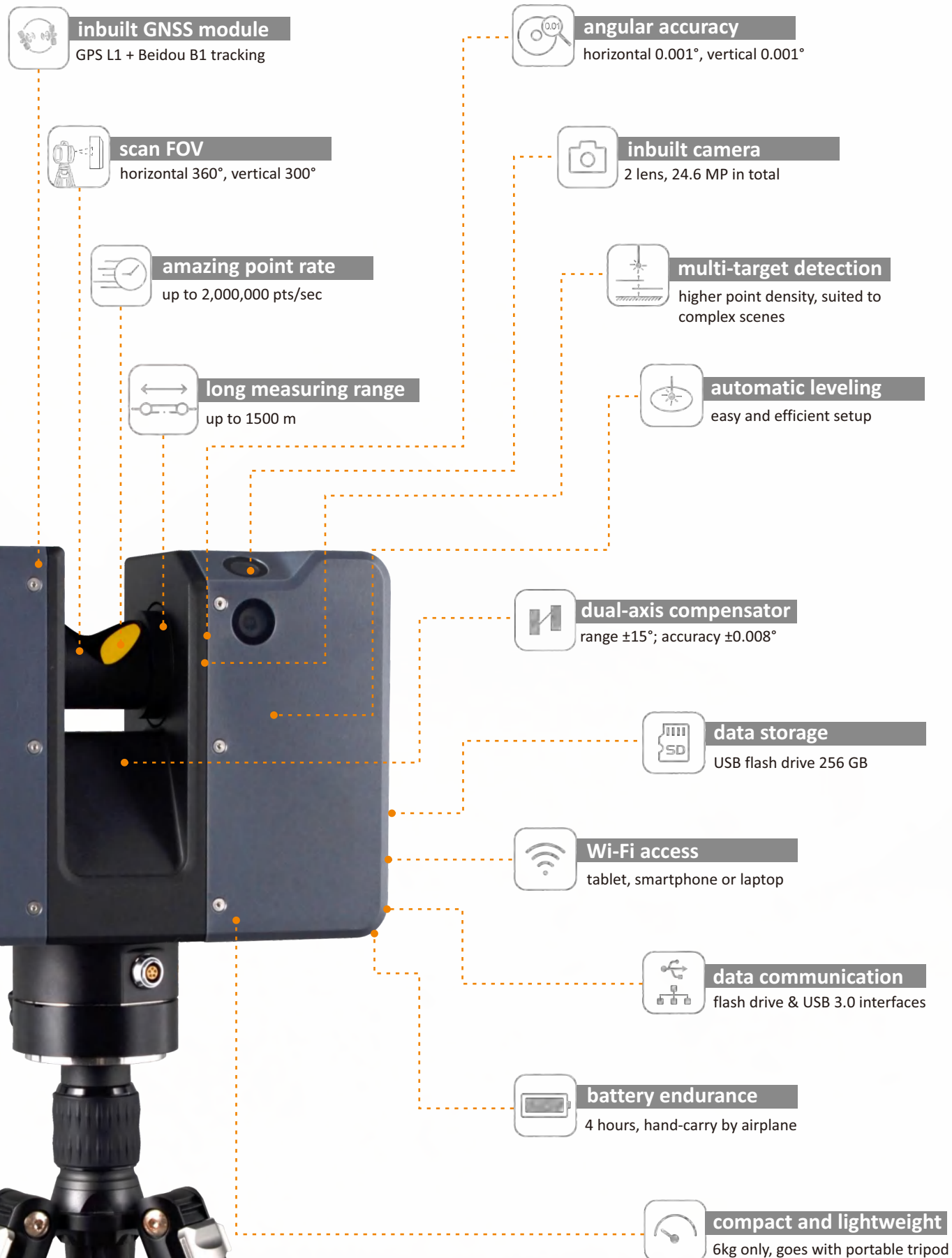
No.	Item	Description	Quantity
standard configuration			
①	3D Laser Scanner Unit	model: SPL-500	1
②	Lens Protective Cover		1
③	USB Flash Drive	USB 3.1, 256 GB	1
④	Rechargeable Battery	28.8 V, 3400 mAh, 97.92 Wh	2
⑤	Battery Charger		1
⑥	Charger Adapter		1
⑦	Carrying Case		1
⑧	Lightweight Tripod	packed with a soft bag	1
⑨	Software Dongle Key	for post-processing AcuteLas Studio	1
optional accessories			
⑩	scanner sphere	6 nos. as one set, packed in a separate case ready to place in front and behind both	6
⑪	Backpack		1
⑫	RTK Connector		1



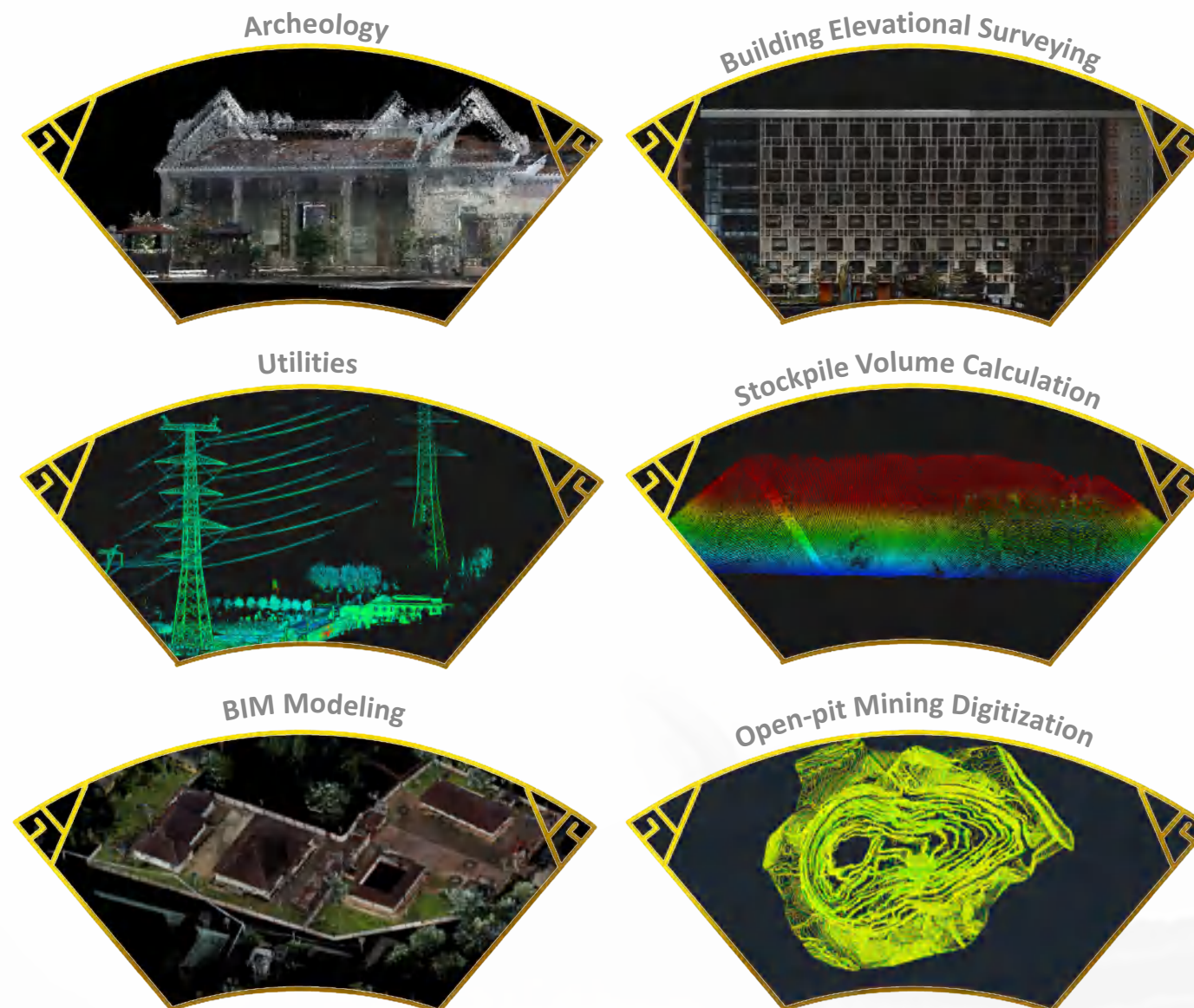
AcuteLas Series
SPL-1500/SPL-620/SPL-370/SPL-180
Pulse. Portable. Accurate. Efficient



FEATURES



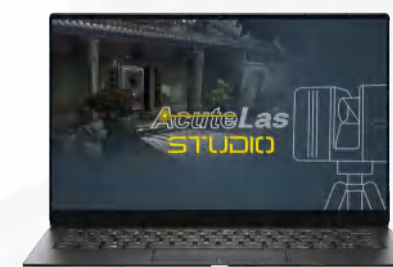
APPLICATIONS



SOFTWARE

SYSTEM REQUIREMENTS

Operating System	Windows 10 IoT Enterprise or higher
Processor	Intel® 13th Gen Core™ i7 processor or better
RAM	32 GB or better
Storage	SSD 1 TB or better



- © Data integration: Import&Export formats to support SOUTH and other formats (XYZ, E57, PCD, LAS, PLY, etc.)
- © Automatic and manual registration, refinement, and reporting
- © Geo-referencing: convert to local coordinate system by importing survey control files
- © Automatic and manual classification
- © Data interaction (2D, 3D and setup view)
- © 3D calculation (distance, area, and volume)