

## SPECIFICATIONS

GNSS Performance	
Channels	1598
GPS	L1C/A, L2P, L1C, L2C, L5
GLONASS	G1, G2, G3
BeiDou	B1I, B2I, B3I, B1C, B2a, B2b
Galileo	E1, E5b, E5a, E6, E5AltBoc*
QZSS	L1C/A, L5, L1C, L2
SBAS	L1, L5
IRNSS	L5*
L-Band*	B2b

Positioning Accuracy	
Code Differential	Horizontal: ±0.25m+1ppm
GNSS Positioning	Vertical: ±0.50+1ppm
SBAS Positioning	Typically<5m 3DRMS
High Precision Static	Horizontal: ±3mm+0.1ppm Vertical: ±3.5mm+0.4ppm
Fast Static and Static	Horizontal: ±2.5mm+0.5ppm Vertical: ±5mm+0.5ppm
Post Processing	Horizontal: ±8mm+1ppm
Kinematic (PPK)	Vertical: ±15mm+1ppm
Real Time Kinematic (RTK)	Horizontal: ±8mm+1ppm Vertical: ±15mm+1ppm
Network RTK (VRS, FKP, MAC)	Horizontal: ±8mm+0.5ppm Vertical: ±15mm+0.5ppm
RTK Initialization	Time 2-8s, reliability >99.99%
Positioning Rate	1Hz-20Hz
Inertial Measurement	Tilt Angle: up to 60 degrees Accuracy: down to 2cm (Typically less than 10mm+0.7mm/°tilt)

Data Formats	
Positioning Data	NMEA 0183, PSIC, PJK, Binary Code
Differential Correction	RTCM 2.1, RTCM 2.3, RTCM 3.0, RTCM 3.1, RTCM 3.2, CMR, CMR+
Static	STH, Rinex 2, Rinex 3
Network	Supported VRS, FKP, MAC, Ntrip

Operation Mode	
Rover	Rover Network\ Rover Bluetooth
Static	Static\ PPK

Hardware	
Size	156mm*78mm
Weight	1.3kg (dual batteries included)
Data Storage	8GB SSD internal storage Support external USB storage (up to 32 GB) Automatic cycle storage Changeable record interval Up to 20Hz raw data collection
Communication	4 Indicator lights 1 Button 1 Type C USB port 1 5-PIN LEMO external power port 1 Micro SIM card slot Linux OS WEB UI WIFI: 802.11 b/g/n standard Bluetooth 4.2 standard and Bluetooth 2.1+EDR Network: 4G LTE\3G WCDMA\2G GSM NFC Supported USB, FTP, HTTP data communication
Voice Guide	Intelligent voice technology provides status indication and operation guide Chinese, English, Korean, Russian, Portuguese, Spanish, Turkish and user define

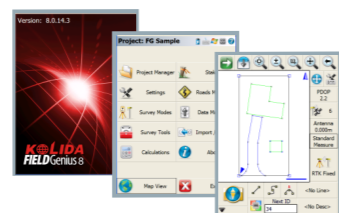
Environment	
Environment	Operating: -30°C to +70°C Storage: -40°C to +80°C
Humidity	100% condensation
Ingress Protection	IP68 waterproof, sealed against sand and dust
Shock	Survive 2m pole drop on concrete

Power	
Battery	7.2V, 3400mAh battery, two units, hot swappable
Battery Life	Base up to 10 hours Rover up to 15 - 20 hours Static up to 20 hours
USB recharge	Power Bank Supported

## FIELD SOFTWARE



K Survey



Field Genius



Surv X

**K7**

**The Power to Be Your Best**



- \* 1598 GNSS channels, best-in-class signal tracking capability
- \* GPS + GLONASS + BDS + GALILEO + QZSS
- \* Centimeter level correction data through L-band
- \* 2G, 3G & 4G Network mode up to 8-10 km working range
- \* Inertial Measurement up to 60° tilt angle down to 2cm accuracy
- \* Dual battery hot-swappable, Up to 20 hours working