

SPECIFICATIONS

KTS-552R15	
Measuring Range	
1P	5.0km
3P	8-10 km
Non prism	1500m
Digital Display	Maximum: 99999999.9999 Minimum: 0.1mm
Accuracy	With prism: 2mm+2ppm, without prism 3mm+2ppm
Measuring Time	Tracking 0.1s, Fine 0.3s (optimal)
Atmospheric Correction	Automatic Correction by Inputting Parameter
Prism Constant	Automatic Correction by Inputting Parameter
Angle Measurement	
Measurement Method	Absolute Encoding
Diameter of The Raster Disk	79mm
Minimum Reading	1 " / 5 " Optional
Accuracy	2 "
Detection Method	Horizontal: Four Sensors Vertical: Four Sensors
Telescope	
Image	Erect
Length	154mm
Effective Aperture	45mm (EDM 50mm)
Magnification	30 X
Field of View	1° 30'
Resolving Power	3 "
Minimum Focus	1.2m
Reticle	Illuminated, 4 Brightness Level
Compensation	
System	Dual axis liquid-electric
Working Range	±4'
Resolving Power	1 "
Sensitivity of Vials	
Plate Vial	30 " /2mm
Circular Vial	8' /2mm
Laser Plummet (Default)	
Type	Laser Point, 4 Brightness Level
Accuracy	±1.5mm at 1.5M Instrument Height
Wavelength	630-670nm
Laser Class	Class 2 /IEC60825-1
Laser Power	<0.4mW
Optical Plummet (Optional)	
Image	Erect
Magnification	3x
Focusing Range	0.5m
Field of View	5"
Accuracy	±1.5mm at 1.5M Instrument Height
System Config	
Operating System	Android 6.0
Processor	MT6753, 8 Cores, 1.5 GHz
Internal Memory	RAM: 3GB; ROM: 32GB
Communication	
Interfaces	- Micro Sim Card Slot - USB Type C (OTG) - TF Card
Network	2G 900/1800 3G 2100/900 CDMA BCO TDSCDMA A/F 4G LTE band1/3/7/38/39/40/41 Bluetooth 4.0
Bluetooth	
WLAN	Dual-Band Single Stream 802.11 a/b/g/n RF for Data Link
Microphone / Speaker	Available
Display	
Type	5", Graphic, Color Touch Screen 1280 * 720, Dual Faces
Battery	
Type	Lithium-ion, 7.4V, 3100 mAh, two pieces
Operating Time	8 Hours
Dimension	
Size	200mm*170mm*350mm
Weight	5.7kgs
Environmental	
Temperature Range (Operation)	-20°C~50°C
Protection	IP55

KTS-552R15

The High Performance
Total Station with Greater
Efficiency, Connectivity and Productivity



- Android 6.0 O.S
- Up to 1500m Reflectorless EDM
- Large High-resolution Display
- Cable-free Connection by Bluetooth, wifi, GSM
- Intuitive On-board Software - Survey Star

KOLIDA
Professional's Choice

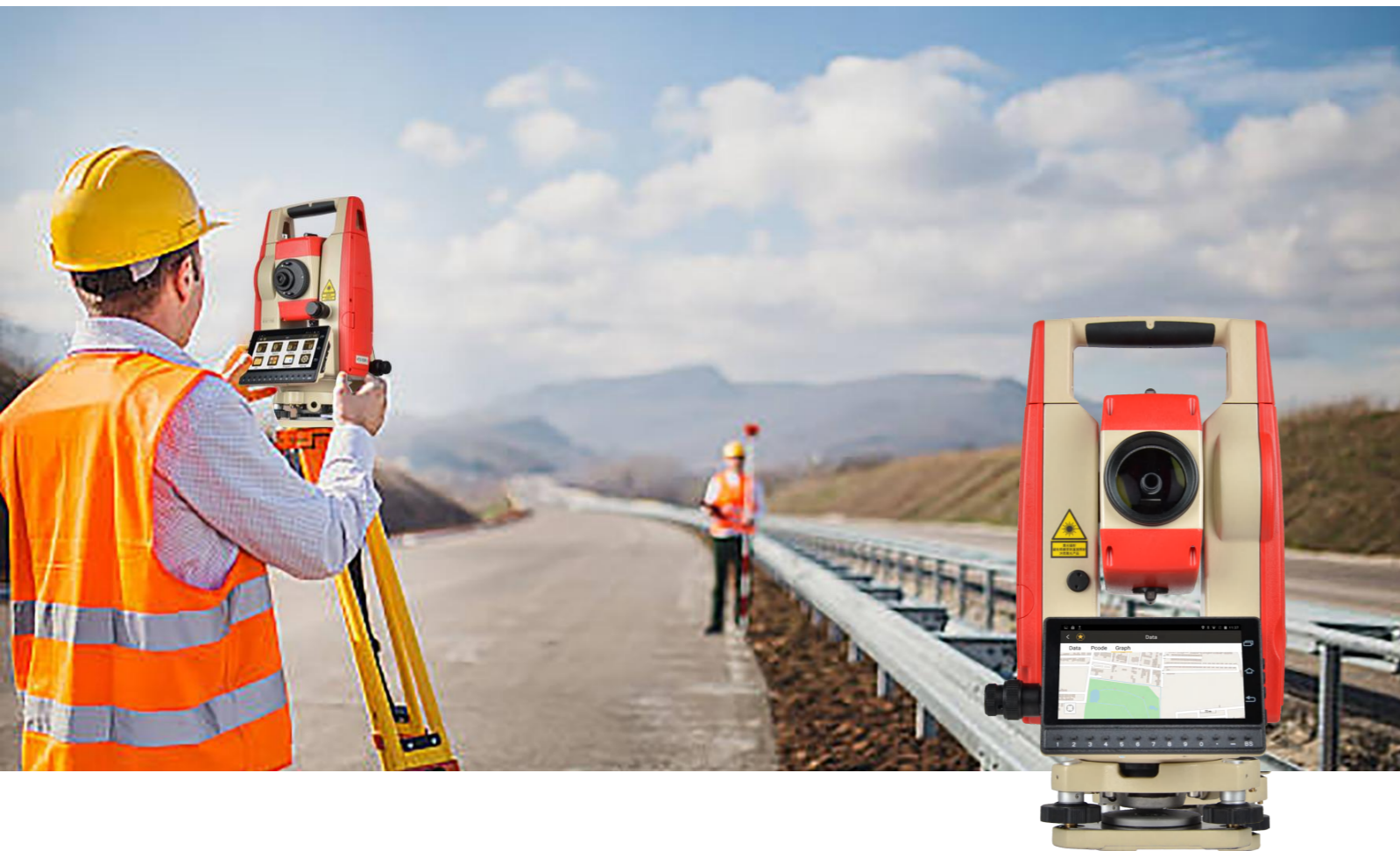
KOLIDA
Professional's Choice

GUANGDONG KOLIDA INSTRUMENT CO., LTD.

Add: 7/F, South Geo-information Industrial Park, No.39 Si Cheng Road, Tian He IBD, Guangzhou 510663, China
Tel: +86-20-22139033 Fax: +86-20-22139032
Email: export@kolidainstrument.com market@kolidainstrument.com http://www.kolidainstrument.com

Kolida's Vision and Mission:

Delivering more values to global users by providing sustaining innovation and uncompromising quality



Powerful

The Kolida KTS-552 total station provides a reliable and efficient solution to users who need to work faster, measure and stakeout more points. Equipped with a 8-cores 1.5 GHz CPU, 3 + 32 GB memory, the system works much smoother and calculate much faster than old generation equipment, it also performs better when importing large size base map or design files.

Intuitive and Dependable

With the 5 inches, 1280 * 720, high clarity touch screen, KTS- 552 can turn complex data numbers into realistic graphic displays.

Import CAD file and setout from basemap, more intuitive and less error happens.

More information and buttons can be displayed in one screen, the better visuality makes workflow easier and shorter.

Simple and Upgradable

KTS-552 is powered by Android OS, easy to learn, combined with Kolida SurveyStar field software, it offers a simple and productive way of working.

Moreover, user can develop and install their own application into the system, to meet their special work demand.

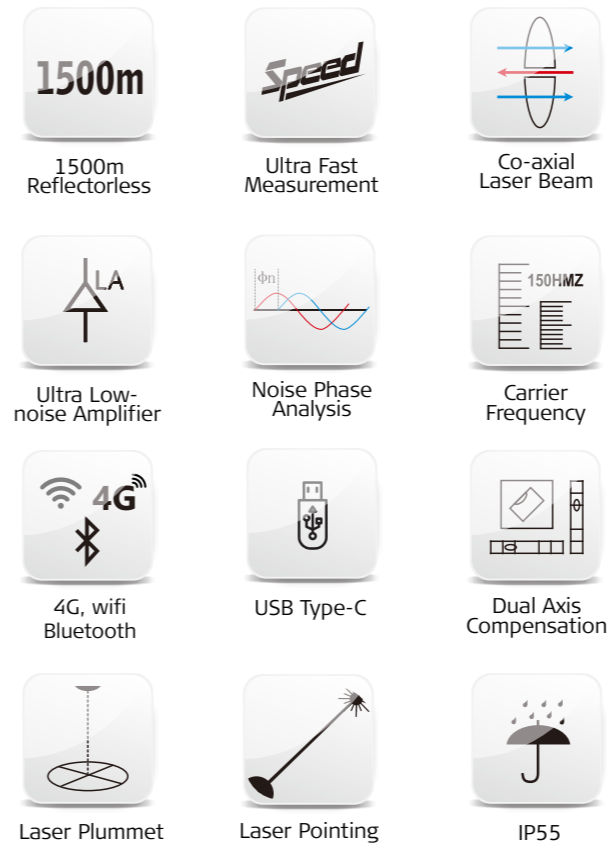
Connect Office and Field

4G and wifi technology brings a greater connectivity to KTS-552, user can choose a convenient way to transmit data file to office or download data file (for example online map) from internet at any time any where.

With internet connection, user can get online update to Kolida SurveyStar APP and continuously increase functions and productivity.

Seven Major Improvements To lift your capability and productivity

TECHNOLOGIES



PROGRAMS

Station:
Known Pt, Resection, Point to Line, Free Station...

Collect:
Point Collect, Distance Offset, Plane Offset, Column Offset, REM, Line & Point, Line & Angle...

Stakeout:
CAD Stakeout, Point Setout, Reference Line, Line Setout...

COGO:
Reduction, XYZ Calc., Inverse, Area & Girth, Dist. Conversation, Angle Conversation, Average, Triangle Calc., Calculator...

Video and Article: <http://www.kolidainstrument.com/news/details/id/121.html>

