



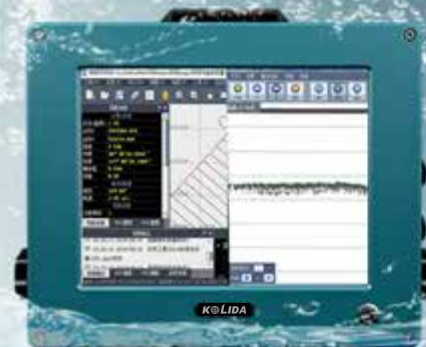
SOE-2600

Dual Frequency Digital Echo Sounder



SDE-2600

Dual Frequency Digital Echo Sounder



SPECIFICATIONS

Measurements	
Frequency	High: 200 kHz Low: 20KHz,24KHz,33KHz(optional)
Beam Angle	7°
Depth Resolution	0.01m
Accuracy	200 kHz: $\pm 1\text{cm} \pm 0.1\%D$ (D is the depth value) 33 kHz: $\pm 10\text{cm} \pm 0.1\%D$ (D is the depth value)
Ping Rate	14Hz, Maximum 30Hz
Sound Velocity	1300-1700m/s
Depth Range	High: 0.3-300m Low: 0.8-2000m
Draft	0-9.9m
Gain Control	AGC and TVG, depth and gain, a double door tracking
Output Data Format	NMEA0183, DESO25, SOUTH, SDH-13D
Physical	
Environmental	-30°-60°non-condensing
Output Power	High:300-400w Low: 600-800w
Power Supply	9-18V DC, 110V-260V AC
Dimension	35cm × 30cm × 15cm
Weight	7.5kg
Hardware Part	
Embedded System Index	CPU frequency 1.6GHz RAM 2G ROM 16G
Interface	3 × USB, 2 × RS232, 1 × VGA
Operatin System	Embedded windows XP
	12.1-inch color LCD
	Touch screen
	Embedded windows XP OS
	Power ON/OFF
	Interface protection
	Separate Panel Overlay for

Remarks

Measurement accuracy and operation range might vary due to atmospheric conditions, signal multipath, obstructions, observation time, temperature, signal geometry and number of tracked satellites. Specifications subject to change without prior notice.



STANDARD CONFIGURATION

1. Echo Sounder SDE-260D	1pc
2. Carrying Case (for echo sounder)	1pc
3. Transducer	1pc
4. Transducer Pole	1pc
5. Carrying Case for Transducer	1pc
6. Double RS-232 Communication Cable	1pc
7. 220V External Power Supply Cable	1pc
8. 220V External Power Supply Cable Adapter	1pc
9. 12V External Power Supply Transfer Cable	1pc
10. Keyboard (USB)	1pc
11. Mouse (USB)	1pc
12. USB DISK	1pc