

# X6

*Dual-frequency Handheld Receiver*



Laser centering



Beidou



High accurate  
positioning



Industrial  
3-proofings



Bluetooth



Wireless  
Wi-Fi



Touch  
screen



HD  
Camera



Network  
module

- \* HD large 5-inch touch screen which fulfill the Android users needs
- \* Android version supports multiple languages switch
- \* Octa-Core 1.5GHz processor
- \* Micro-USB port and OTG function
- \* Being equipped with laser centering component
- \* Multiple sensors and more extended functions

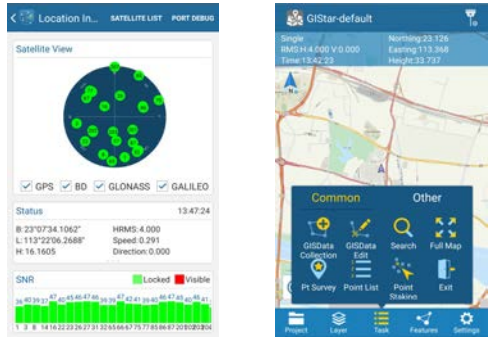




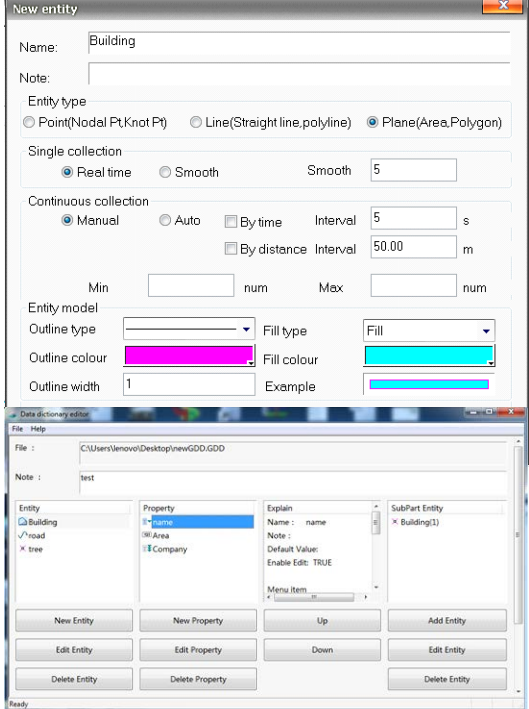
| Specifications   |  |   |
|--|--|---|
| <b>System</b>  | Operation system                       | Android 5.1   |
|  | Processor                              | Octa-Core 1.5GHz  |
|  | Storage                                | 3GB RAM   |
|  |  | 32GB ROM<br>Up to 128G extensible through SDHC card   |
| <b>GNSS</b>  | Channels                               | 336   |
|  | GNSS                                   | GPS (L1,L2 ) GLONASS( L1,L2) BDS GALILEO and RTX(Optional)  |
|  | Data output                            | NEMA-0183   |
|  | I/O protocol                           | RTCM2.3(1, 3, 9), RTCM31 etc.   |
|  | Update rate                            | 1Hz   |
|  | Reacquisition                          | <1s   |
|  | Cold start                             | <30s  |
|  | Antenna                                | Internal dual frequency antenna   |
|  | L-band                                 | Optional  |
|  | Accuracy                               | SBAS : 0.50m Horizontal 0.85m Vertical  |
| DGNSS : 0.25m±1ppm Horizontal 0.50m±1ppm Vertical                            |  |   |
| Single base line RTK(<30km) : 0.008m±1ppm Horizontal<br>0.015m±1ppm Vertical |  |   |
| Others   | Laser centering, external antenna port |   |
| <b>Multimedia</b>  | Camera                                 | 8.0 megapixel AF, flashlight  |
|  | Display                                | Capacitive screen 5.0' scratch resistable and sun readable 1280×720   |
|  | Sensor                                 | Electronic compass, gravity sensor, built-in thermometer, atmospheric pressure altimeter, light sensor and distance sensor (optional) |
|  | other function                         | Integrated speakers and microphone  |
|  | Extended function (optional)           | Scanning head, NFC, backtalk, Fingerprint identification  |
| <b>Communication</b>   | network                                | LTE   |
|  | Bluetooth                              | BT4.0 downward compatible to BT2.1+EDR  |
|  | WIFI                                   | IEEE 802.11 b/g/n   |
|  | USB                                    | Micro B type Support USB charging and OTG function  |
| <b>Electrical</b>  | Battery                                | Changeable 3.7V,7200mAh Li-Ion,2 batteries (standard)   |
|  | Battery life                           | Single battery> 10 hrs  |
|  | Battery charging                       | 2 stands charger, 4 hrs fast charging; supports car-charger and charge pal  |
| <b>Environment</b>   | Waterproof/Dustproof                   | IP68  |
|  | Shockproof                             | 1.5m  |
|  | Temperature                            | Storage temp:-40°C~80°C Operating temp:-40°C ~70°C  |
| <b>Physical property</b>   | Size                                   | 231×92×57mm   |
|  | Weight                                 | 677g (battery included)   |

### Software

**GISStar** (for Android) Completely new professional Android integrate GIS application, which adopts GIS technology to collect and manage geographic data. GISStar takes advantage of the Android touch screen capability by allowing you to tap the points and lines in your drawing to open tool bars with all the function you need instantly. It also supports various data format import and export, such as shp file, dxf file, kml file and gpx file, which fully meets the demands of different of users.



**Data Dictionary Editor:** A windows software that helps pre-define the GIS entity. With this software, we can describe and manage the properties of each entity. After that we just need to copy the \*.GDD file which saved from Data Dictionary Editor into X6 internal storage, and then field work will be efficient and faster with GISStar.



### GUANGDONG KOLIDA INSTRUMENT CO., LTD.

Add: 7/F, South Geo-information Industrial Park, No.39 Si Cheng Road, Tian He IBD, Guangzhou 510663, China  
 Tel: +86-20-22139033 Fax: +86-20-22139032  
 Email: export@kolidainstrument.com market@kolidainstrument.com http://www.kolidainstrument.com