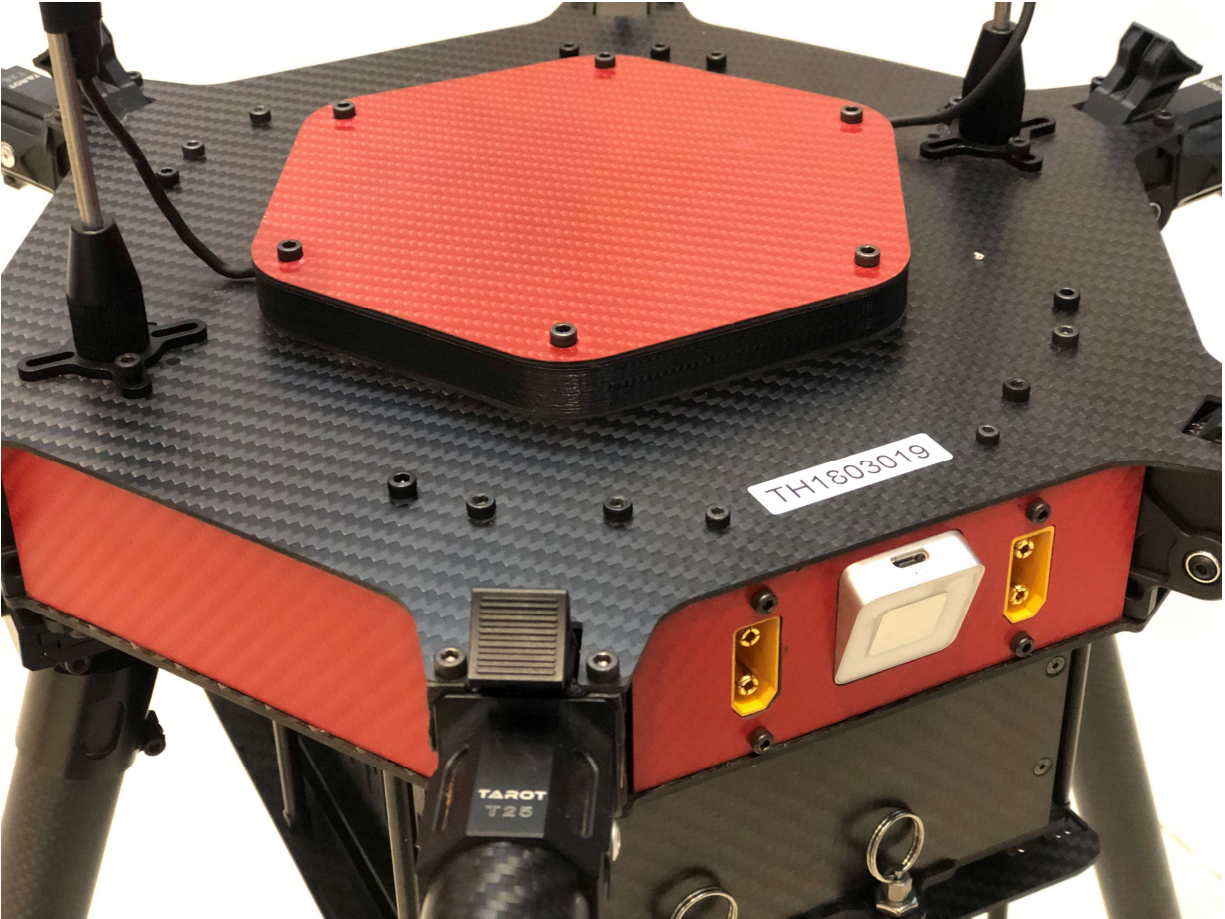

SkyWalker X63





X63 Specifications

Model name	SkyWalker X63	SkyWalker X63-PPK	SkyWalker X63-RTK
Aircraft type	Hexacopter(6-rotary wings)		
Dimension	120×120×40 cm		
Material	Carbon fiber reinforced polymer		
Propulsion system	6 brushless motors		
Empty weight	Approx. 4.10kg	Approx. 4.50kg	Approx. 4.50kg
Standard payload capacity	1.5kg		
Maximum take-off weight	13-15kg		
Battery weight (2units as a group)	3.95kg		
Battery (per unit)	Lithium-polymer battery, 12S, 16500mAh		
Accelerometer	Onboard		
Barometer	Onboard		
Magnetometer	Onboard		
Gyroscope	Onboard		

GPS receiver	√		
PPK Receiver	×	L1/L2 GNSS (GPS/GLONASS/Beidou)	×
RTK Receiver		×	L1/L2 GNSS (GPS/GLONASS/Beidou)
Baud Rate	×	5Hz/20Hz/50Hz, optional	5Hz/20Hz/50Hz, optional
single point positioning accuracy	±10m	±2.5m	±2.5m
Relative accuracy	/	1/2×GSD	1/2×GSD
Absolute accuracy(w/o GCPs)	/	Down to 25cm	Down to 25cm
Absolute accuracy(w GCPs)	/	Down to 5cm	Down to 5cm
Endurance	50-60 mins	45-55mins	45-55 mins
Effective Photography Duration	Approx. 40-50 min		
Pre-flight setup	5 mins		

Cruising speed	8m/s (best) 10m/s (maximum)
Climbing speed	4m/s
Flight height	1500-3500m (max. ceiling,) above ground level under ideal condition
Radio link control range	5km (normal); 10-12km (best, upon upgrade)
Communication frequency	900MHz
Launch/ Recovery	Vertical Take-off & Landing System (VTOL)
Weather limit	Stable in the winds up to 10m/s(36km/s), Beaufort scale 5
Operating Temperature Humidity	-10°C to 45°C, 90%
Standard camera unit	Sony DSLR a5100,24.3MP, E20mm, F2.8/ Sony DSLR, A7 full frame, 36.4MP, E35mm, F1.8
Advanced camera unit	Integrated 5-lens camera system, D5LR, approx.1.6 kg 20MPx5, E16mm, upgradeable to 24MPx5,E20mm,&36.4MPx5,E35mm
Other options	Wireless digital video transmitter, infrared thermal imager, etc.

Notes: The 60-minute flight performance results from clear weather with gentle

breeze or no wind, temperature between 10°C to 20°C, properly and fully charged batteries, plus well-trained operation. For safety reasons, it's strongly recommended not to reach the limit. For best accuracy, it's required to fly under the following conditions, clear sky without cloud or fog, wind speed below 8m/s, altitude within 1000m, visibility up to 5+ km, and solar elevation angle more than 45 degrees.

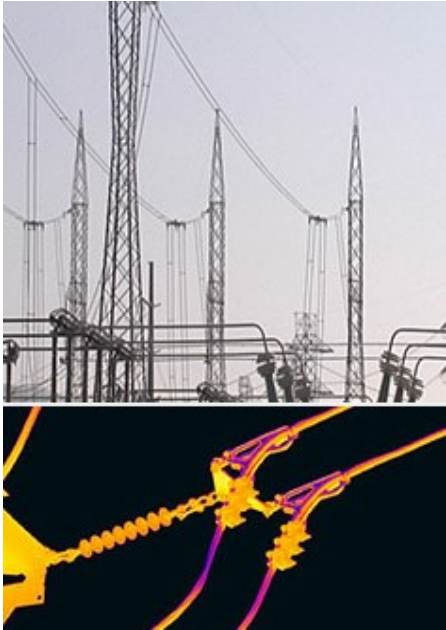
Applications:

Survey and mapping field: Topographic surveying, Urban planning, cadastral survey, etc.

Forest fire forecast or fire-fight field



Power patrol inspection:



Precision agriculture :

